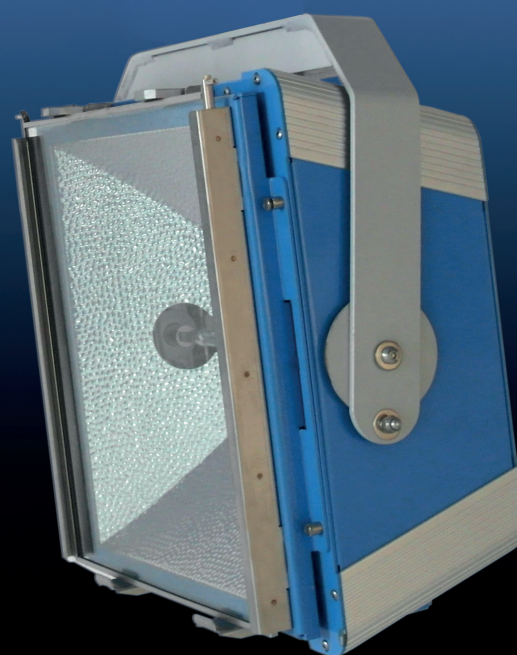


Formerly known as



Floodlight SFL

2.0 kW up to 4.0 kW

System-Features

- Available in two sizes
- Efficient Cooling
- Special Reflectors
- Different beam angles

Advantages

- Universal practicality
- For continuous operation
- High light yield
- Variable light distribution

Floodlight SFL 2.0 kW flat **Floodlight SFL 2.0 kW deep**
Floodlight SFL 2.5 kW flat **Floodlight SFL 2.5 kW deep**
Floodlight SFL 4.0 kW flat **Floodlight SFL 4.0 kW deep**

Technical details

- Robust housing with extruded sections and aluminium sheet
- Powder-coat finish, high-temperature resistant
- Built-in ignitor, thermally insulated, easily changeable
- Compact, with low temperatures at socket
- Due to design perfectly suitable for use in climatic chambers and wind tunnels
- Tool-less bulb exchange from front side
- Wide symmetrical beam angle of approx. 60° to both sides
- Special style lamps such as temperature controlled lamps available
- Dimensions 460 x 440 x 250 / 380 mm
- Weight approx. 15 kg / 17 kg (without bracket and filterglass)

Accessories, general

- Mechanical shutter
- Bracket
- Frontglass H1 (indoor)
- Frontglass H2 (outdoor)
- Dimming grids with various transmission

Power Supplies

- Electrical power supplies, designed and made inhouse
- EVG EPS20C-HQI / EVG 25 C-HMI / 40 C-HMI / 80 C-HMI
- Power factor corrected (PFC)
- 1-phase mains connection 208 V – 240 V, 50/60 Hz

Accessory for Floodlight 2.0 kW

- Bulb HQI 2000 W

Accessory for Floodlight 2.5 kW

- Bulb HMI 2500 W/DXS

Accessory for Floodlight 4.0 kW

- Bulb HMI 4000 W/DXS

Mechanical Shutter

- The shutter easily slides into the lamp rails
- Completely blocks irradiation
- Designed for continuous operation
- Lamp output automatically reduced to 50% when shutter is closed
- Dimensions 860 x 520 x 60 mm
- Weight 6.0 kg



mechanical shutter

hönle group		Curing	Drying	Bonding	Potting	Measuring



Dr. Höhle AG UV Technology, Lochhamer Schlag 1, 82166 Gräfelfing/München, Germany
 Phone: +49 89 85608-0, Fax: +49 89 85608-148. www.hoenle.de

Operating parameters depend on production characteristics and may differ from the foregoing information.
 We reserve the right to modify technical data. © Copyright Dr. Höhle AG. Updated 05/16.